



Bag Liners

Certikin
FLUIDRA

Certikin Bag Liners

Certikin has been manufacturing liners for over ten years, and is now firmly established within the liner market – and for good reason.

With a pattern and colour range which continues to provide the traditional options but also challenge the 'norm', we offer a wider choice than ever before to liven up almost any pool. In-house state of the art cutting procedures ensure even the most complex shapes and sizes can be recreated. Our overall delivered package – which includes our unique reinforced card-fibre drum, as opposed to a cumbersome box, and a free-of-charge selection of Certikin liner fittings – offers value for money that nobody else can match.

Our pool vinyls are sourced from the world's leading vinyl manufacturers: Canadian General Tower, Elbtal Plastics and Renolit, all of whom create materials to exacting standards and have a combined manufacturing experience of over 160 years. This range of supply allows Certikin to have a wide choice of patterns and colours, including many exclusive designs, without compromising quality.

Modern design and manufacturing techniques allow us to take these excellent materials and create a high quality liner for almost any size or shape of pool, including those with features such as ledges, freeform curves, cover pits and integral steps.

As such, all of the liners Certikin manufacture offer the following qualities and features:

- Lacquered surfaces over high quality prints to help guard against abrasion, staining and UV attack
- Inclusion of anti-microbial bodies to help combat biological attack and marking
- High levels of flexibility
- High resistance to breaking, tearing and puncturing
- Resistance to water temperatures up to 30°C
- Resistance to pool chemicals in a balanced water environment
- Manufactured in a clean, purposely equipped factory environment incorporating trained staff and cutting and welding machinery specifically designed for the manufacture of pool liners

It should be noted that despite best efforts and best practice during manufacture, and despite use of the finest raw materials, the following restrictions apply and/or the following effects may be visible and are in no way considered faults and are not covered by the warranty.

- Patterns on printed floor and wall panels and on tile bands, including mosaics, may not match at the seams due to high stretch factors, pattern complexity and cutting techniques – aesthetic quality is not regarded as a warranty issue – pool owners should be made aware of this when choosing a liner pattern
- Many darker materials are printed on lighter backgrounds. It is therefore common to have a fine light-coloured line along each seam due to the flow of material as it fuses together – this is the mark of a solid weld and is not a fault
- Liner installation should ideally not be attempted in temperatures of below 10°C as the stretch factor of the liner will be greatly reduced – if installation is planned in temperatures lower than this please contact The Liners and Covers Division to discuss sizing
- If you are not happy with the initial fit of the liner, stop the installation and call us to discuss. **DO NOT CUT THE LINER.** Cutting of the liner will be seen as acceptance of the product

10 YEAR GUARANTEE

All Certikin factory made liners come with a 10 year pro-rata guarantee on their manufactured processes – i.e. seams and joins. This guarantee is against the welded seams of the vinyl liner and the connection of the beading strip. All other elements remain within the standard 5 year reducing guarantee.

PACKAGING

Most Certikin liners will be delivered to the required address in a steel reinforced card-fibre drum so the liner can be rolled rather than carried to the pool side.



Tile Band Options

Combine with any wall and floor mix for an attractive and protected finish at the waterline.

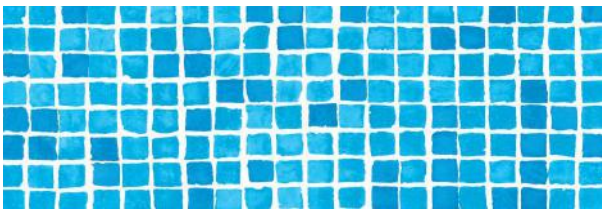
Note: Tile band widths vary from design to design. Please enquire if this will be a concern.



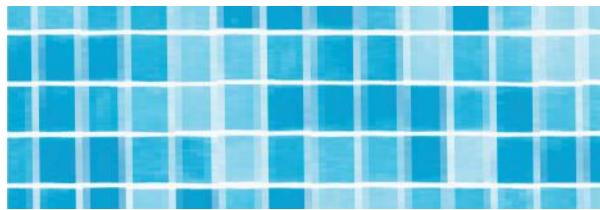
Oxford Grey



Oxford Sand



Mosaic



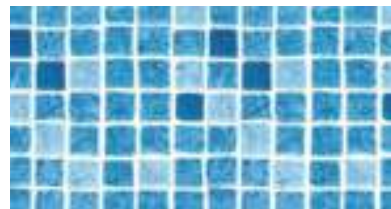
Crystal Mosaic



Persia Sand Mosaic



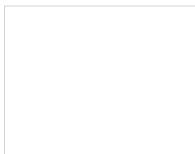
Persia Grey



Persia Blue Mosaic

Plain Liner Options

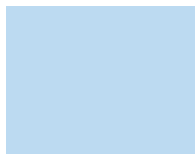
For an all over solid colour, or as a combination with any tile or pattern to create contrast.



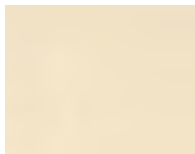
White



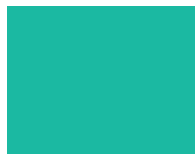
Adriatic Blue



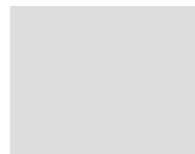
Ice Blue



Sand



Aqua



Pale Grey



Dark Grey

Patterned Wall & Floor Liner Options

For an all over patterned finish, or mix and match with plain colours and tile bands.



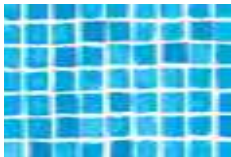
Black Slate



Granit Grey



Granit Green



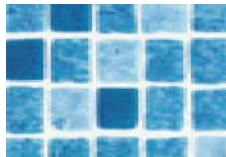
Mosaic



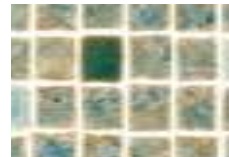
Crystal Mosaic



Gemstone Light Blue



Persia Blue Mosaic



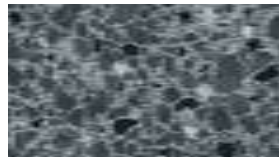
Persia Sand Mosaic



Persia Grey Mosaic



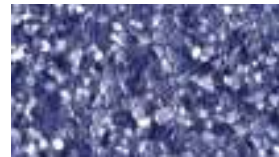
Ocean Midnight



Antigua



Sandstone



Riverstone



Blue Marble

Smooth-seam

Our unique soft-bar welding technique has been improved in order to offer the most aesthetic seam possible. Traditional welding techniques use a harsh brass welding electrode to create the vinyl seam, this can result in a very pronounced and hard seam which can catch on the feet and be a dirt trap. Certikin's 'smooth-seam' allows the vinyl edges to be softened into one another, thus creating a flatter, smoother and better looking liner, without compromising quality. NOTE: The 'smooth-seam' process is designed as an aesthetic improvement, it is not designed to make seams disappear or for patterns at seams to match - aesthetic quality is not covered by the manufacturer's guarantee.



Free Samples

In many instances the illustrations of our pattern range in this catalogue do not reflect the aesthetic quality of our materials. The best way to establish how the pool will eventually look is to view the vinyl by browsing through one of our sample folders.

All of our samples are provided free of charge.

To request samples (including cover samples) please contact The Liners and Covers Division on 01993 777200.



Exclusive Contemporary Tile Band Liners

Certikin's exclusive range of contemporary tile band liners offers a wide range of options, with a choice of colours and designs which can contrast greatly from the standard and commonly seen traditional ranges.

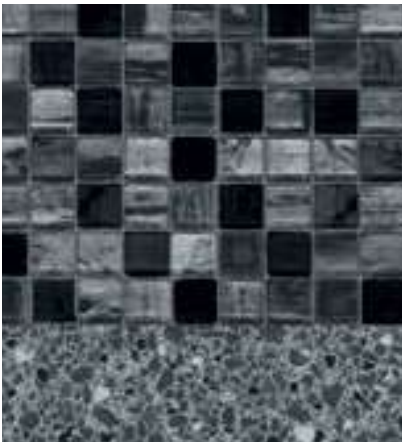
Stock is held in two forms, a narrow width wall section with a pre-printed border over an appealing wall design, and then a wider floor section which is the same pattern as the background of the wall – the two combine together to form an all-over pattern with a distinctive co-ordinated tile band.

The pre-tailored wall depths offer a perfect fit against the common 3'4" shallow end wall, but because the floor panel is a match, any wall depth can be achieved by flowing the floor material up the wall.

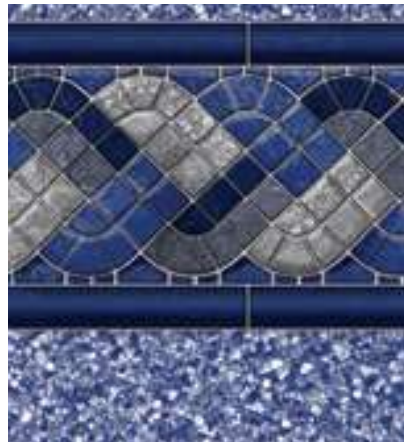
In certain circumstances vinyl strips will be added to the base of the pre-made wall to extend the depth. For Bourbon Street and Royal Mosaic pattern this matching at the seams is not possible.

Whilst the contemporary tile designs are pre-printed onto the basic wall design, it is also possible to cross-match these tile bands with any other patterned or plain wall/floor combination. We can manually trim the required tile band from one wall section and then weld it onto the desired wall pattern. Naturally this does introduce some wastage of materials and extra labour content for us, therefore a running metre surplus charge should be applied to the base cost of the liner you desire.

Tile band widths vary – please enquire if this will be a concern.



Silver Horizon



Rayleigh



Sierra Midnight



Blue Slate Aquashimmer

Certikin

FLUIDRA

www.certikin.co.uk



Contact your Certikin stockist for prices and availability.

This literature is intended as a guide.
The company reserves the right to change the specifications without notice.