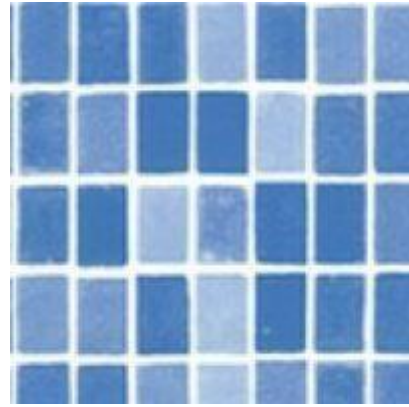
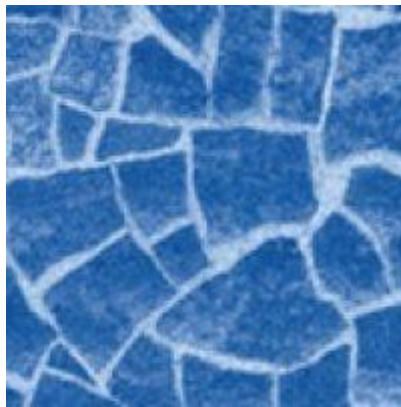


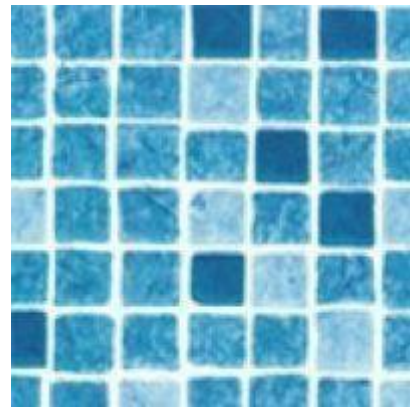
Mosaic (.750mm)



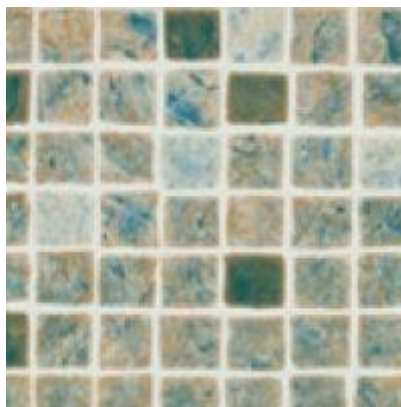
Byzance (.750mm)



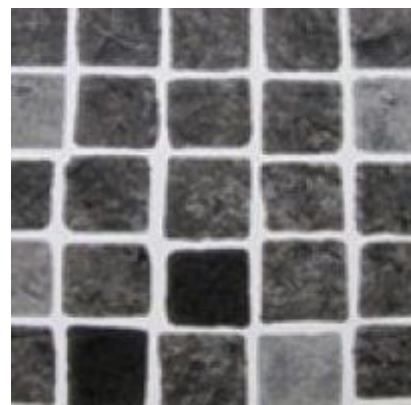
Carrara (.750mm)



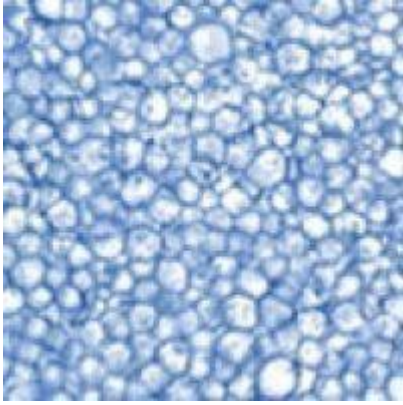
Persia Blue (.750mm)



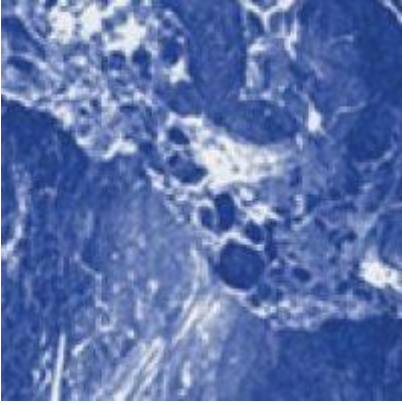
Persia Sand (.750mm)



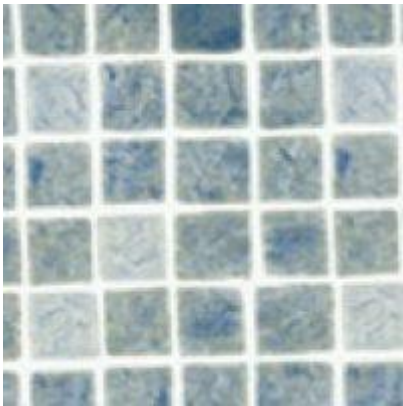
Persia Black (.750mm)



Coral (.750mm)



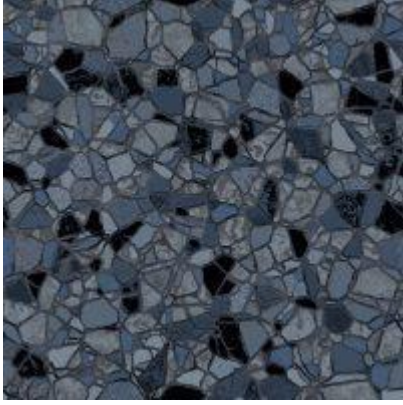
Marble (.750mm)



Persia Grey (.750mm)



Slate (.750mm)



Butterfly Grey (.750mm)

Pre-Tailored Liners – Pattern Choice

The top surface of our reinforced pool liners are coated with an exclusive protective varnish, which has the main function of extending the liner's life. The varnish has a high concentration of U.V.absorbing materials, which provide the best protection against sunlight, the effects of time or adverse weather conditions. The varnish forms a barrier between the liner and the water, preventing the migration of the plastifying agents and premature ageing of the liner.

This varnish ensures the liner maintains its resistance and flexibility over a long period of time. It also acts as a protective shield against attacks by micro-organisms. Furthermore, the varnish repels stains caused by suntan oils, lime scale deposits, organic matter and micro-organisms.

Benefits of the lacquer

- Prevents the development of bacteria and fungi, making the pool more hygienic.
- Protects the liner from UV radiation and prevents premature ageing.
- Repels dirt and stains and facilitates the cleaning of the liner.
- Acts as a shield against abrasion and due to continual use.

